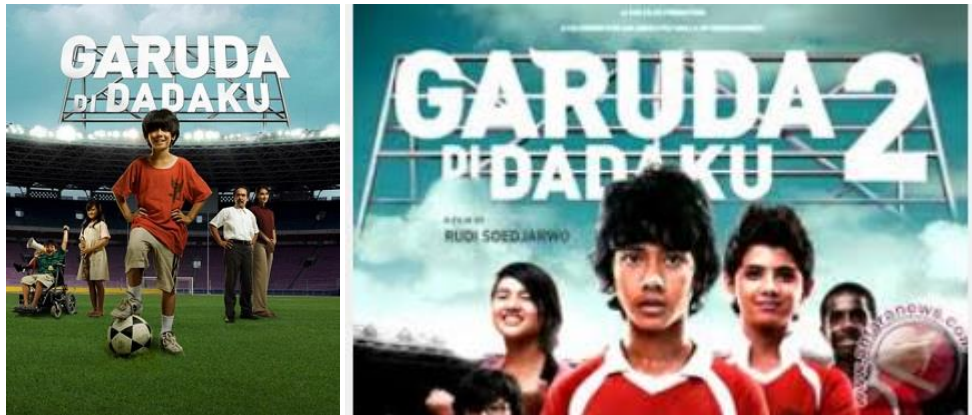


Garuda di Dadaku 2

Garuda on my Chest/Garuda in my Heart

Garuda di Dadaku 1 was directed by [Ifa Isfansyah](#). It was his first feature film; he had had previously produced and directed several short films.^[1] The director had played football as a child, which may have played a role in the film's production.^[2] [Salman Aristo](#) was approached by producer Shanty Harmayn to write the screenplay, a task which he accepted.^[3]

Production took more than six months.^[2] Twelve-year-old Emir Mahira was cast in the lead role of Bayu after his football skills impressed the crew.^[4] Ifa found working with children difficult, as they often did not listen to directions. He began letting the children act naturally, and found the results "moving".^[2] In an interview with [The Jakarta Post](#), he recalled that he "realized this film belonged to them. This is their world, and we, the adults, are like the keepers."^[2] ^(Wikipedia)



Cast



Emir Mahira
Bayu



Marsha Aruan
Zahra



Maudy Kusnaedi
Wahyuni



Aldo Tansani
Heri



Ikranagara
Pak Usman

[View 5+ more](#)

Garuda di Dadaku 2 : Bayu (Emir Mahira), who is a member of **elite national soccer team U-15**, wants to prove that he can bring his team to win ASEAN junior competition in Jakarta. With support from his best friend, Heri (Aldo Tansani), the new girl in school he is attracted to, Anya (Monica Sayangbati), and the new coach Mr. Wisnu (Rio Dewanto), Bayu leads his friends working hard to reach the final. However, a new guy on the team, Yusuf, steals Bayu's spotlight as the rising star. Now the team is in great disarray, and Bayu runs away from the training. With the big match approaching, can Bayu and his team bring victory to Indonesia?

1. **What colour is their SMP (Junior Secondary School) school uniform ?**

.....

2. **What is their school project ?**

.....

3. **Why does Bayu put the Thailand ticket in his sock ?**

.....

4. What are some of the **similarities** between Bayu and his friends's way of life and your own way of life ?
 Comment on the following: Provide examples from the film.

Clothes & School Uniform

.....

Food & Eating Habits

.....

Daily Activities

.....

Family Relationships and Friendships

.....

5. Now comment on the **differences** that you notice between Bayu and his friends way of life and your own .

Clothes & School Uniform

.....

Food & Eating habits

.....

Daily Activities

.....

Family Relationships and Friendships

.....

6. **Did you enjoy this film ? Why or why not ? What were some of the highlights ?**

.....

.....