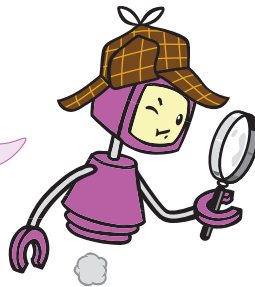


# How do I get there?

GPS devices can be very useful things, but only if their maps are up to date. Luckily the Smarts have their own hovering mobile GPS device available 24/7! Now, where was I? In 500 metres at the roundabout, take the third exit ...



**LINKS TO:**

Stage 3, Module 13  
Learning Object 4: *Turn left at the next intersection*

**PRIOR LEARNING:**

**Stage 2**

Module 3 Work Sheet 1: *Where are we now?*  
Module 4 Work Sheet 3: *Where in the world am I?*  
Module 9 Work Sheet 5: *A monumental day out*  
Work Sheet 6: *What's your favourite place in Jakarta?*

**Stage 3**

Module 7 Work Sheet 7: *Shopping around*

## 1 Can you give me directions to ...

There are several expressions you can use when seeking directions.

➔ For example:

*Permisi, bagaimana saya bisa ke ...?*

Excuse me, how can I get to ...?

*Permisi, bisa tunjukkan jalan ke ...*

Excuse me, can you please give me directions to ...

*Permisi, di mana ...?*

Excuse me, where is ...?

*Permisi, ... ada di mana?*

Excuse me, where is ...?

If you find yourself giving directions to someone, remember to use short, simple sentences in a logical order. This will help to make the directions easy to follow. To give travel directions in Indonesian, you will need to know some basic terminology.

➔ For example:

<i>Mulai di ...</i>	Start at ...
<i>Jalan terus</i>	Go straight ahead
<i>Belok kiri/kanan di perempatan berikutnya</i>	Turn left/right at the next intersection
<i>kemudian / lalu</i>	then
<i>sampai</i>	until / upon arrival at ...
<i>kira-kira</i>	approximately
<i>di ujung jalan</i>	at the end of the street
<i>di sudut Jl. ... dan Jl. ...</i>	on the corner of ... Street and ... Street
<i>di bundaran</i>	at the roundabout
<i>masuk</i>	enter
<i>keluar dari</i>	exit from
<i>jalur keluar (ketiga)</i>	the (third) exit
<i>ambil</i>	take
<i>lewat</i>	go past

(continued on following page)

## Wrong way, go back! \_\_\_\_\_

In a big city, it is easy to get lost. You may find yourself explaining your situation to a person on the street.

➡ For example:

*Saya salah jalan!*

I've gone the wrong way!

*Saya tersesat!*

I'm lost!

*Salah Jalan!*

Wrong way!

To express the number of directions available at an intersection, we use the circumfix **per~ ... ~an** with the relevant number.

➡ For example:

*pertigaan*

three-way intersection

*perempatan*

four-way intersection

*perlimaan*

five-way intersection

To indicate that a road is one-way or two-way we say:

*Jalan satu arah*                      one-way road

*Jalan dua arah*                      two-way road

### Note:

In Jakarta's busy traffic, cars must have at least three occupants to legally travel on the city's best roads during peak-hour periods. The aim of this regulation is to reduce the number of traffic jams, but it has resulted in traffic 'jockeys'. Jakarta motorists pay them to travel in their cars in peak hour, to get

around the three-in-one rule. Because babies count, and they cost less to hire than an adult, women and their young children stand on feeder roads all over the city touting for business. This service costs the driver about 20,000 rupiah or \$A2.00 per ride.

## 2 It's just around the corner ...

When describing a street location in relation to its surroundings, there are some basic language structures you can use. These are the same structures that you learnt in Stage 2 for expressing location. Let's take another look at them.

subject	verb	prepositional phrase	prepositional phrase
<i>Toko serba ada Sarinah</i>	<i>ada / terletak</i>	<i>di Jl. Thamrin</i>	<i>di samping restoran McDonald.</i>
Sarinah Department Store	is located	in Thamrin Road	next to McDonald's.

Subject		prepositional phrase	prepositional phrase
<i>Letaknya</i>	<i>Toko serba ada Sarinah</i>	<i>di Jl. Thamrin</i>	<i>di samping restoran McDonald.</i>
The location of	Sarinah Department Store	[is] in Thamrin Road	next to McDonald's.

# Exercises

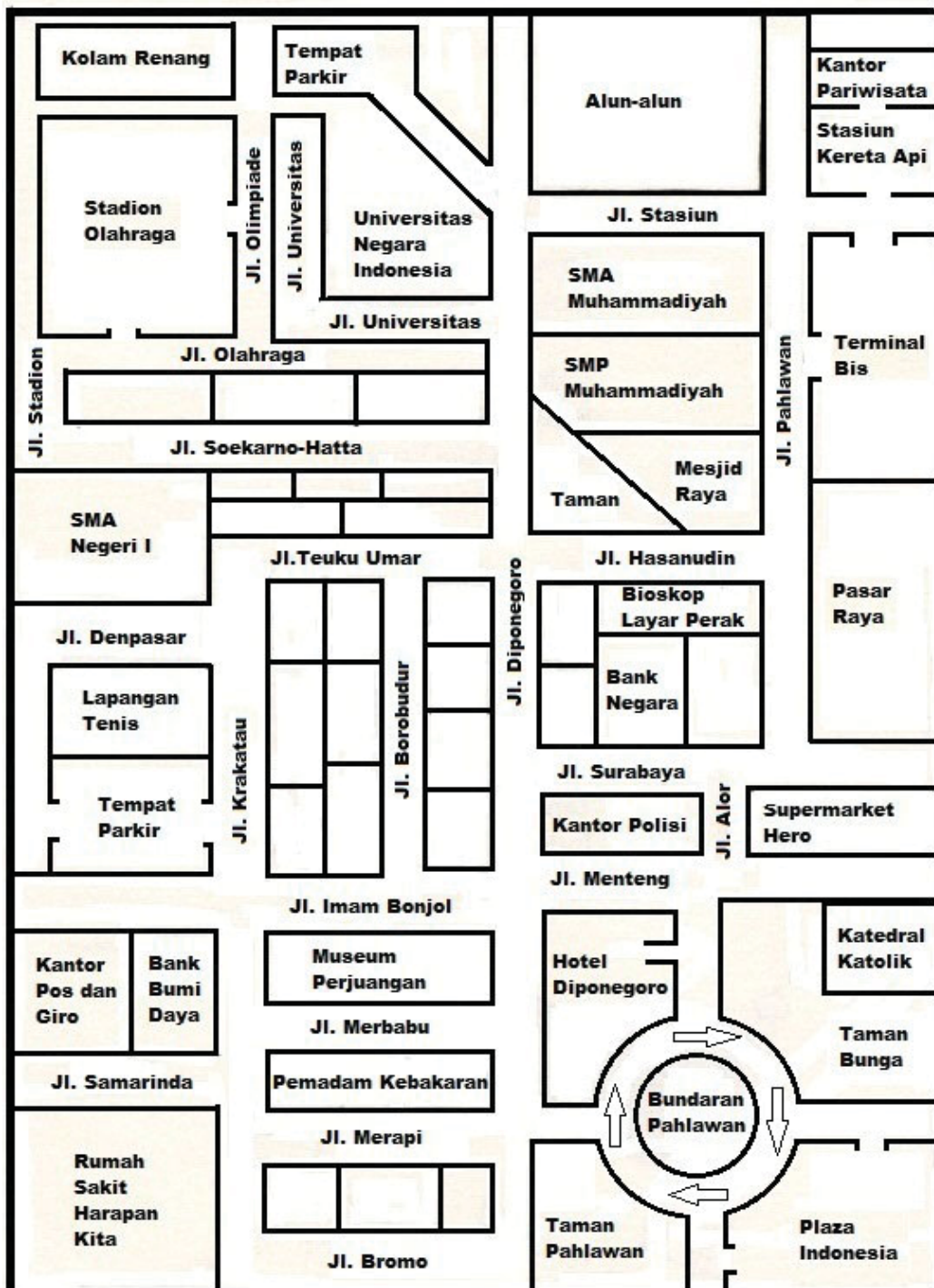
## Exercise 1

The Smart family has just arrived at Stasiun Kereta Api in Rembang, which is the closest town to the village of Sekarsari, where they are going to spend a couple of days. They plan to visit Nenek who is in hospital for a health check-up, and stay overnight in Rembang. Then they will take the bus with Nenek to Sekarsari.

First, they go to the Kantor Pariwisata (Tourism Office) located behind the railway station, to get directions to:

- the Rumah Sakit Harapan Kita (hospital)
- the Hotel Diponegoro
- the Museum Perjuangan (Struggle for Independence Museum).

Use the map of Rembang below to write the three conversations between Mr Smart and the Tourism Office clerk. The first one has been started for you.



(continued on following page)

1.1

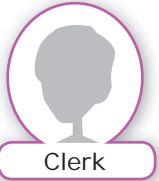


1

Permisi, di mana lokasi Rumah Sakit Harapan Kita?

2

Rumah Sakit Harapan Kita terletak di sudut Jl. Krakatau dan Jl. Samarinda.



Mr Smart

3

Bagaimana saya bisa ke sana?

4

Anda harus ...

Clerk



1

[Empty speech bubble for Mr Smart]

2

[Empty speech bubble for Clerk]



3

[Empty speech bubble for Mr Smart]

4

[Empty speech bubble for Clerk]



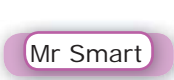
1.3



1



2



3

4



## Exercise 2

The Smarts have visited Nenek at the hospital and made arrangements to pick her up tomorrow morning. They have also been to the museum and are now resting at their hotel. Anna has noted an advertisement about the Indonesian Super League soccer match being held at the Rembang Sports Stadium later that evening. She goes to the hotel reception and asks for directions to the stadium.

**Write Anna's conversation with the hotel receptionist.**



1

Selamat sore. Saya mau menonton pertandingan sepak bola Indonesia Super League di stadion nanti malam. Di mana lokasi stadion?

2

Stadion Olahraga Rembang terletak di ...



Anna

3

4

Receptionist