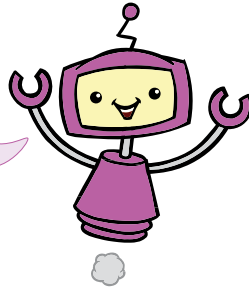


I love the spotlight

The quiz 'What kind of entertainer are you?' in Learning Object 4 was lots of fun. Would you like to have another go at it? You can see the quiz again in this work sheet and have a go at making your own quiz.



LINKS TO:

Stage 3, Module 1
Learning Object 4: *What kind of entertainer are you?*

PRIOR LEARNING:

Stage 2

Module 6 Work Sheet 1: *Very interesting*

Stage 1

Module 8 Work Sheet 1: *Someone can't rollerblade*

Module 7 Work Sheet 6: *Favourites and preferences*

Module 5 Work Sheet 2: *What do you like to play?*

1 Are you suitable?

In Learning Object 4, *What kind of entertainer are you?* Anna completed a quiz that asked lots of questions. In this work sheet, you will have an opportunity to take the same quiz. First, let's have a quick look at some of the language that is often used in a personality quiz.

Talking about ability

➔ For example:

Apa kamu bisa menghafal dialog?

Can you remember lines?

Aku bisa membaca dialog.

I can read dialogues.

Talking about interests

As you have previously learnt, you need to remember to use the phrase *tetarik pada* when talking about interests. Interestingly, the word *tetarik* comes from the base word *tarik* meaning 'pull'. *Tetarik pada* is a passive verb phrase meaning literally 'being pulled towards something'.

Apa kamu tertarik pada orang lain?

Are you interested in other people?

Aku tertarik sekali pada orang lain.

I am very interested in other people.

Aku lebih tertarik pada diri sendiri.

I am more interested in myself than others.

Talking about likes and dislikes

Some of the questions and answers in the quiz are about likes and dislikes.

➔ For example:

Aku suka sekali menjadi pusat perhatian.

Or:

Aku sangat suka menjadi pusat perhatian.

I love being in the spotlight.

Talking about frequency

When asking how often someone does something, use the question phrase *berapa sering*, meaning 'how often?' You have learnt previously that *sekali* is a modifier meaning 'very'. However, in the context of frequency, *sekali* is a combination of the particle *se~* meaning 'one' and *kali* meaning 'time'. So *sekali* means 'one time' or 'once'.

➔ For example:

Berapa sering kamu melakukan 'contact juggle'?

How often do you do juggling?

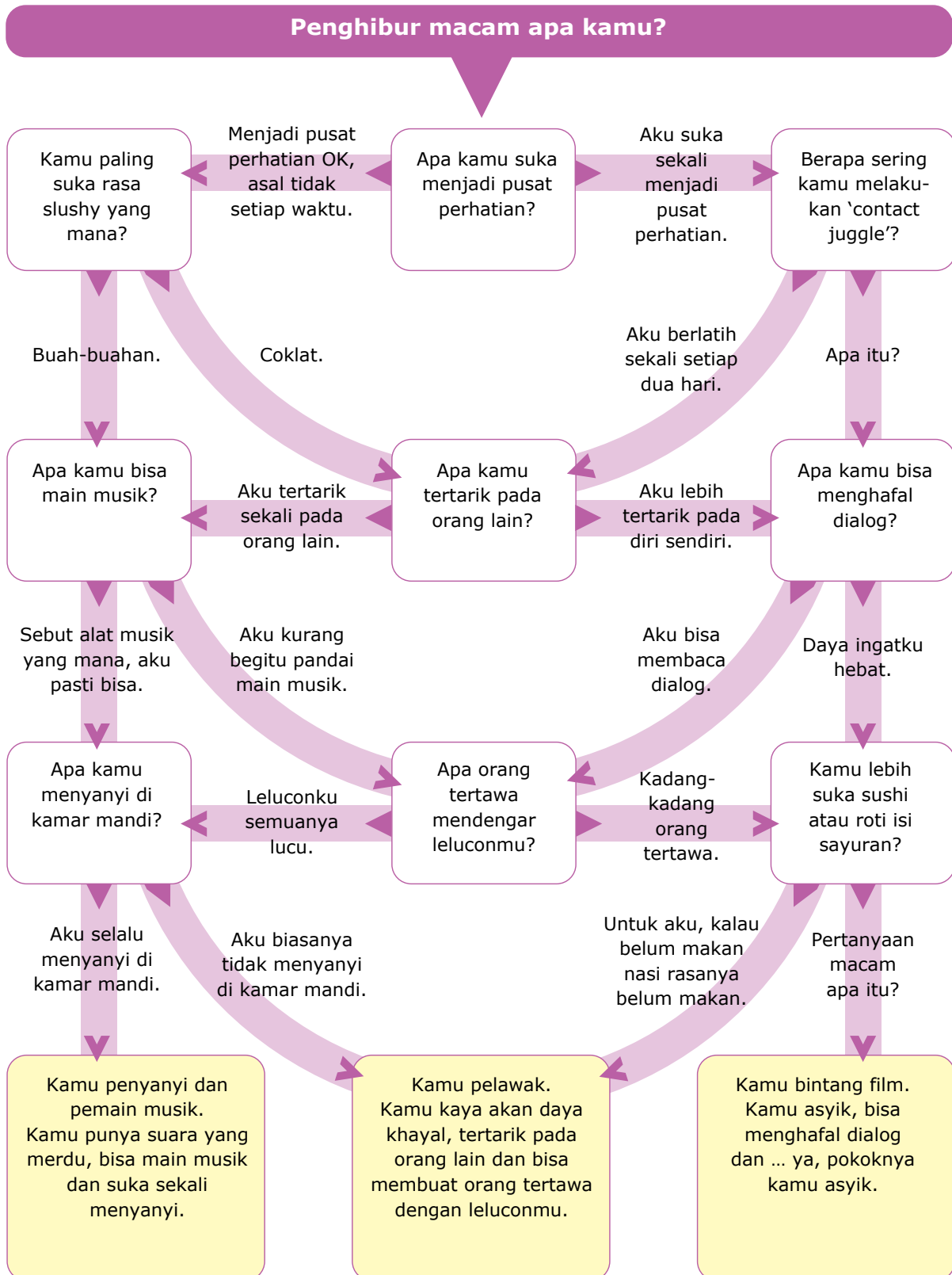
Aku berlatih sekali setiap dua hari.

I practise once every two days.

Exercise 1

In Learning Object 4, *What kind of entertainer are you?* Anna completed a quiz designed to help her identify what type of entertainer she could become. The quiz is reproduced below.

Complete the quiz to find out what sort of entertainer you could become, and then answer the questions that follow.

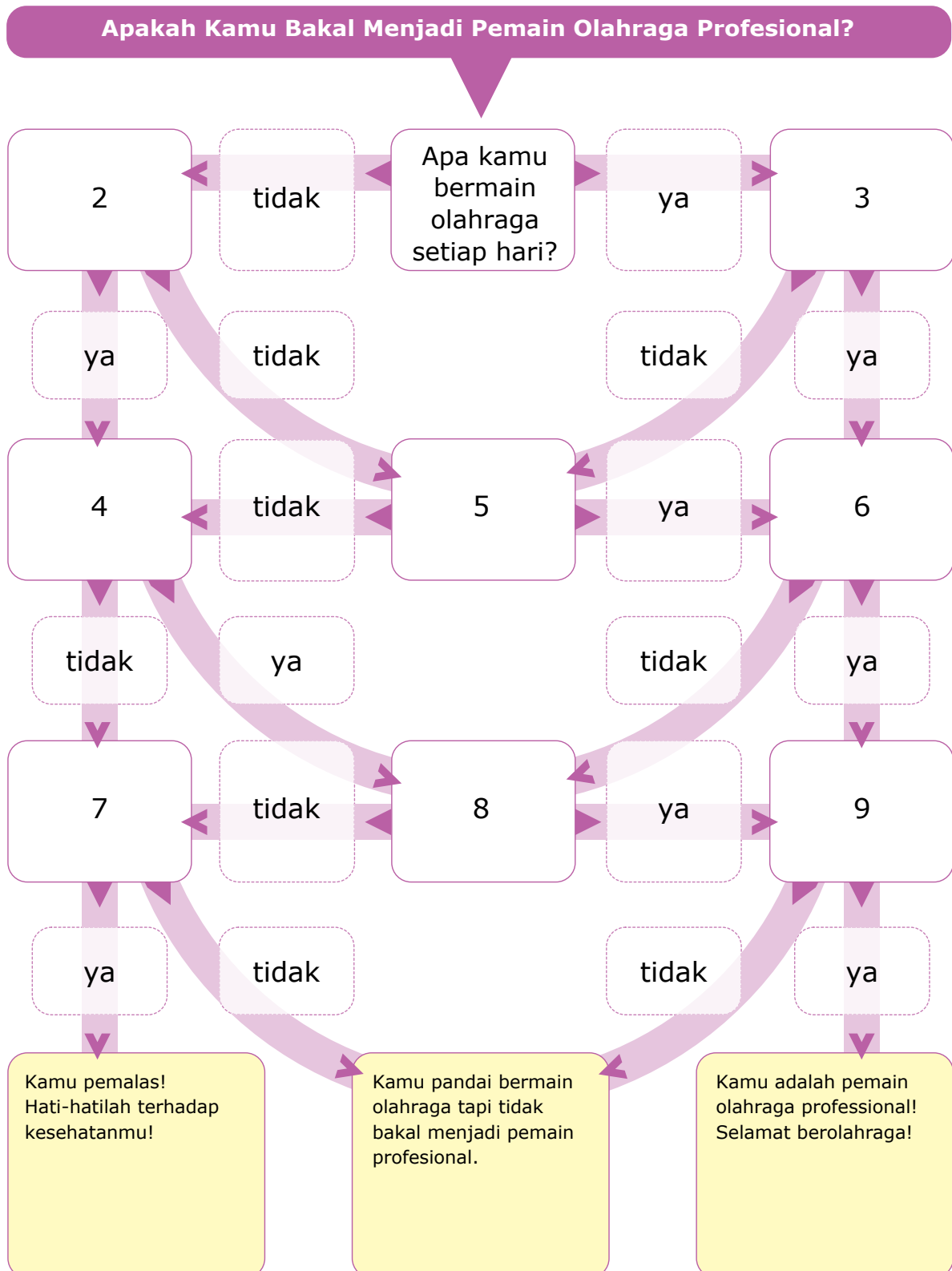


Exercise 2

Now it's your turn to design a similar personality quiz, this time to help people work out whether they have what it takes to be a professional sports player.

Using questions that require only 'yes' or 'no' answers, complete the quiz by writing suitable questions in Indonesian for each of the boxes in the numbered spaces that follow.

The starter question, and the final outcomes, have been provided for you.



(continued on following page)

1.

2.

3.

4.

5.

6.

7.

8.

9.