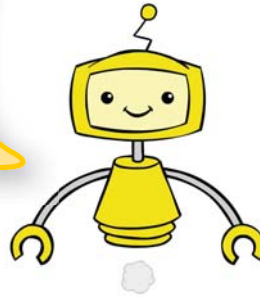


# Making new friends

Friends are so important. And they want to know what you like and don't like. This work sheet helps you build up a personal profile that will help you make new friends at school.



**LINKS TO:**

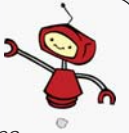
Stage 2, Module 2  
Learning Object 4: You've got a friend

**PRIOR LEARNING:**

**Stage 1**

Module 1 Work Sheet 7: *Expressing likes and dislikes*

Module 4 Work Sheet 8: *The person who likes fish ...*



## Liking and disliking ...

1

► **Likes**

Do you remember using modifiers to help modify or intensify adjectives? We learnt that when modifying adverbs are coupled with the word **suka**, which means 'to like', they serve another useful function. That is, they express the degree to which something is liked.

In Stage 2,  
Module 1, Work Sheet  
6, *Friendly chatter*

For example:

*Anna suka sekali bermain sepak bola.*  
Anna really likes playing soccer.

*Peter paling suka makan mie.*  
Peter likes eating noodles (more than anything).



► **Dislikes**

The degree to which something is liked or disliked is illustrated along the continuum below. In Indonesian *sama sekali tidak suka* means to dislike something intensely.

*Paling suka*

*Suka sekali / amat suka / sangat suka*

*Suka*

*Sedikit suka*

*Kurang suka / tidak begitu suka*

*Tidak suka*

*Sama sekali tidak suka*

*Benci*

*Paling benci*

### Note:

In Stage 2, Module 1, Work Sheet 6, *Friendly chatter*, you learnt that the Indonesian word for 'hate' is **benci**, but *benci* is a very strong word and is not used to express common, everyday, dislikes.



## Coordinators, subordinators and verbs

2

### ► Conjunctions

Two independent clauses in a sentence are linked using coordinators, or coordinating conjunctions. You already know two: *dan* (and) and *tetapi* (but).

For example:

*Peter suka makan mie **dan** minum es kelapa muda.*  
Peter likes eating noodles **and** drinking iced coconut.

*Peter suka makan mie **tetapi** tidak suka minum kopi.*  
Peter likes eating noodles **but** doesn't like drinking coffee.

### ► Subordinate clauses

The word 'because' is called a subordinator: subordinators introduce reasons for the main action.

In Indonesian, two common subordinators are:

- *karena* meaning 'because'
- *sebab* meaning 'as'.

You will be learning more subordinators in future modules but, for the moment, it is sufficient for you to master the use of these two.

For example:

*Peter tidak suka minum kopi **karena** rasanya pahit.*  
Peter doesn't like drinking coffee **because** it tastes bitter.

*Anna tidak masuk sekolah **sebab** dia sakit.*  
Anna didn't go to school **as** she is ill.

### ► Verbs

You will remember that to look up a verb beginning with a *meN-* prefix in an Indonesian dictionary, you need to know the correct spelling of the base word.

Verbs in this group can begin with either a *me-*, *mem-*, *men-*, *meng-*, or *meny-* prefix depending on the first letter of the base word.

In Indonesian some verbs with the *meN-* prefix and the *-kan* suffix are used in an adjectival sense and indicate an attitude or emotion.

For example:

*Murid-murid bosan mendengarkan pidato itu.*  
The students were bored listening to that speech.

*Pidato itu **membosankan**.*  
That speech was **boring**.

In Stage 1, Module 4, Work Sheet 4, *An introduction to Indonesian verbs*

Exercise 1

1.1 Write one sentence about likes and one about dislikes for each person using the information in the table. You do not need to restrict your options to items listed in the Object / Activity column.

Subject	Degree of liking	Verb	Object / Activity
Anna	<i>paling suka</i>	<i>makan</i>	<i>nasi goreng</i>
Peter	<i>suka sekali</i>	<i>minum</i>	<i>sate kambing</i>
Ardi	<i>sangat suka</i>	<i>bermain</i>	<i>es kelapa muda</i>
Nina	<i>amat suka</i>	<i>belajar</i>	<i>kopi</i>
Tono	<i>suka</i>	<i>mendengarkan</i>	<i>bulu tangkis</i>
Ella	<i>sedikit suka</i>	<i>menonton</i>	<i>sepak bola</i>
	<i>kurang suka</i>		<i>Matematika</i>
	<i>tidak begitu suka</i>		<i>bahasa Inggris</i>
	<i>tidak suka</i>		<i>radio</i>
	<i>sama sekali tidak suka</i>		<i>Musik dangdut</i>
			<i>acara Berita Malam</i>
			<i>acara The Simpsons</i>

Anna: \_\_\_\_\_

Anna: \_\_\_\_\_

Peter: \_\_\_\_\_

Peter: \_\_\_\_\_

Ardi: \_\_\_\_\_

Ardi: \_\_\_\_\_

Nina: \_\_\_\_\_

Nina: \_\_\_\_\_

Tono: \_\_\_\_\_

Tono: \_\_\_\_\_

Ella: \_\_\_\_\_

Ella: \_\_\_\_\_

1.2 Why should we avoid using the word *benci* (hate) to describe the degree to which we dislike something?

---

---

---

---

---

---

---

---

**Exercise 2**

Convert the Indonesian base words in the table below using *meN~ ... ~kan* affixes to form a new adjectival verb.

When you have converted the word, work out its new definition in English.

Remember the resulting word should indicate an emotion or attitude.

English	Indonesian	<i>meN~ ... ~kan</i> word	Definition
bored	<i>bosan</i>	_____	_____
contented	<i>senang</i>	_____	_____
annoyed	<i>jengkel</i>	_____	_____
saddened	<i>sedih</i>	_____	_____
scared	<i>takut</i>	_____	_____
satisfied	<i>puas</i>	_____	_____
disappointed	<i>kecewa</i>	_____	_____

### Exercise 3

3.1 While surfing the school website, Peter comes across an area where he can login and complete an online profile to make contact with Indonesian students at the school who share his interests.

You would also like to connect with Indonesian students at the school who share your interests.

Complete the profile form with your personal details.

## Profil Pribadi


Tentang kamu

<i>Nama Lengkap</i>	<input type="text"/>
<i>Umur (tahun)</i>	<input type="text"/>
<i>Tinggi badan (sentimeter)</i>	<input type="text"/>
<i>Berat badan (kilogram)</i>	<input type="text"/>
<i>Warna rambut</i>	<input type="text"/>
<i>Warna mata</i>	<input type="text"/>
<i>Tempat lahir</i>	<input type="text"/>
<i>Tanggal lahir</i>	<input type="text"/>
<i>Tempat tinggal</i>	<input type="text"/>
<i>Alamat email</i>	<input type="text"/>

Teman dan keluarga

<i>Nama ayah</i>	<input type="text"/>
<i>Nama ibu</i>	<input type="text"/>
<i>Nama adik</i>	<input type="text"/>
<i>Nama kakak</i>	<input type="text"/>
<i>Nama saudara kembar</i>	<input type="text"/>
<i>Nama teman-teman</i>	<input type="text"/>

Suka / Tidak suka

<i>Suka makan</i>	<input type="text"/>
<i>Tidak suka makan</i>	<input type="text"/>
<i>Suka minum</i>	<input type="text"/>
<i>Tidak suka minum</i>	<input type="text"/>
<i>Suka menonton acara televisi</i>	<input type="text"/>
<i>Tidak suka menonton acara televisi</i>	<input type="text"/>
<i>Suka film</i>	<input type="text"/>
<i>Tidak suka film</i>	<input type="text"/>
<i>Suka musik</i>	<input type="text"/>
<i>Tidak suka musik</i>	<input type="text"/>
<i>Suka bermain olahraga</i>	<input type="text"/>
<i>Tidak suka bermain olahraga</i>	<input type="text"/>

Cita-cita

*Mau menjadi*

