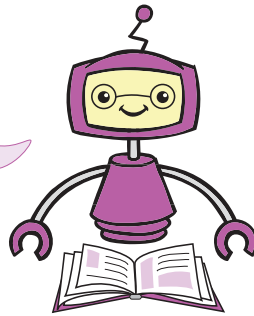


What's in a noun?

After three years in Indonesia I am starting to get on top of the affixation system, so buckle up and come along for the ride as I demystify the *ke~...~an* circumfix for you.



LINKS TO:

Stage 3, Module 7

Learning Object 2: *Where do we start?*

1 The *ke~...~an* circumfix

Did you notice that the previous work sheet was titled *A flood of correspondence*? In Indonesian, this could be expressed as *Kebanjiran korespondensi*. The base word of *kebanjiran* is *banjir*, which means 'flood'.

One of the various functions of *ke~...~an* is to indicate that the subject is overcome by the condition identified by the base word. In this instance, the meaning of *kebanjiran korespondensi* is to be overcome by a flood of incoming correspondence.

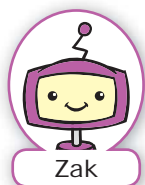
Note:

A 'circumfix' is when both a prefix and a suffix are attached to a base word.

For example: The circumfix *ke~...~an* is added to the base word *dingin* 'cold' to form *keedinginan* 'to suffer from the cold'.

Exercises

Exercise 1



As you have already learnt, one of the main uses of the *ke~...~an* circumfix is to form a verb that indicates that the subject experiences, or is overcome by, something about which they have no control. You've already seen an example (*kebanjiran*), let's look at some others. I'll get you started, but you need to do some of the hard work yourselves.

(continued on following page)

1.1 Complete the table with the *ke~...~an* circumfix of the base words, and the definitions of both the base word and the *ke~...~an* circumfix.

The first two words have been completed as an example.

Base word	Definition	<i>ke~...~an</i> verb	Definition
<i>dingin</i>	cold	<i>keinginan</i>	to suffer from the cold
<i>haus</i>	thirsty	<i>kehausan</i>	to be thirsty
<i>hujan</i>			
<i>kering</i>			
<i>lapar</i>			
<i>panas</i>			
<i>semut</i>			



Zak

Now that you're getting the idea, try your hand with the following group of *ke~...~an* verbs. The purpose of these verbs is to indicate that the subject has a lack of control over a situation or events. This time I've only done the first one for you.

1.2 Complete the table with the *ke~...~an* circumfix of the base words, and the definitions of both the base word and the *ke~...~an* circumfix.

Base word	Definition	<i>ke~...~an</i> verb	Definition
<i>jatuh</i>	to fall	<i>kecetakan</i>	to have something fall on top of you
<i>curi</i>			
<i>habis</i>			
<i>hilang</i>			
<i>maling</i>			
<i>tidur</i>			



Another small group of *ke~...~an* verbs indicates that the subject has a lack of control over their emotions. See if you can solve this one.

1.3 Complete the table with the *ke~...~an* circumfix of the base word, and the definition of both the base word and the *ke~...~an* circumfix.

Base word	Definition	<i>ke~...~an</i> verb	Definition
<i>takut</i>			
<i>susah</i>			



Another function of the *ke~...~an* circumfix is to form adjectives that express excess. The resulting words have the same meaning as the *terlalu + adjective* (too + adjective) pattern. I'm sure you can do all these without any help at all from me!

1.4 Complete the table with the *ke~...~an* adjective, and the definitions of both the base word and the adjective.

Base word	Definition	<i>ke~...~an</i> adjective	Definition
<i>besar</i>			
<i>capai</i>			
<i>gemuk</i>			
<i>kecil</i>			
<i>kurus</i>			
<i>mahal</i>			
<i>murah</i>			
<i>panjang</i>			
<i>pendek</i>			



When *ke~...~an* is applied to base words indicating a part of the day, they have various meanings. Can you guess what they are?

1.5 Complete the table with the *ke~...~an* adjective, and the definitions of both the base word and the adjective.

Base word	Definition	<i>ke~...~an</i> adjective	Definition
<i>pagi</i>			
<i>siang</i>			
<i>sore</i>			
<i>malam</i>			



Another useful expression for describing excess is *keterlaluan*, based on the word *terlalu* (too). It is used to describe behaviour that is 'over the top' or has gone too far.



The *ke~...~an* circumfix is also used to form abstract nouns. 'Abstract' means things that cannot be touched, seen or felt and includes such things as emotions. There are quite a large number of abstract nouns. You can practise with the following examples.

1.6 Complete the table with the *ke~...~an* noun, and the definitions of both the base word and the noun.

Base word	Definition	<i>ke~...~an</i> noun	Definition
<i>bahagia</i>			
<i>bersih</i>			
<i>cantik</i>			
<i>gembira</i>			
<i>hidup</i>			
<i>kacau</i>			
<i>kuat</i>			

(continued on following page)

(continued from previous page)

<i>maju</i>			
<i>mati</i>			
<i>puas</i>			
<i>sedih</i>			
<i>sehat</i>			



Zak

There is a small group of words formed with the *ke~...~an* circumfix that may have two meanings, depending on their part of speech and the context in which they are used. Let's see how you go with these.

1.7 Complete the table with the definitions of the abstract nouns and the adjectives.

<i>ke~ ... ~an</i> word	Abstract noun	Adjective
<i>kelaparan</i>		
<i>kepanjangan</i>		
<i>kependekan</i>		
<i>ketinggian</i>		

Exercise 2



Zak

From now on, you're on your own. I've done enough teaching for today! Let's see how well you can complete the following exercises.

On the following pages are a number of common signs that may appear around Indonesian schools.

Read each of the signs and then answer the questions that follow.



2.1.1 What is the meaning of the word created by using a *ke~ ... ~an* circumfix?

2.1.2 What is the overall message or intent of the sign?

2.1.3 Would you expect to see this sign in an Australian school? Explain your answer.



2.2.1 What is the meaning of the word created by using a *ke- ... ~an* circumfix?

2.2.2 What is the overall message or intent of the sign?

2.2.3 Would you expect to see this sign in an Australian school? Explain your answer.



2.3.1 What is the meaning of the word created by using a *ke- ... ~an* circumfix?

2.3.2 What is the overall message or intent of the sign?

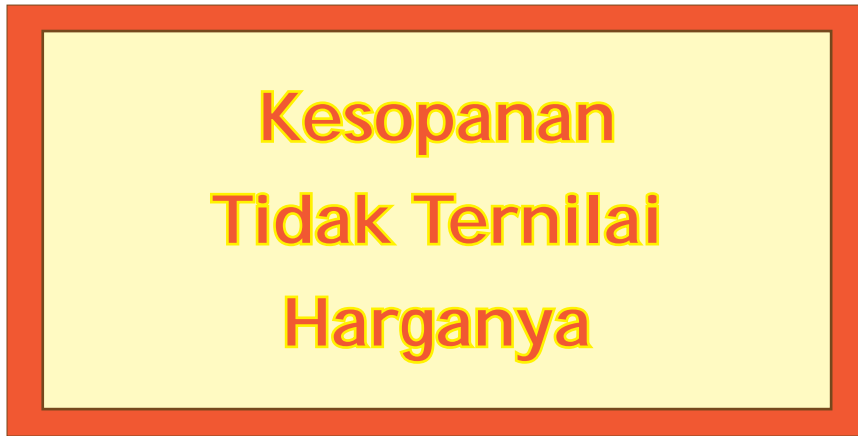
2.3.3 Would you expect to see this sign in an Australian school? Explain your answer.



2.4.1 What is the meaning of the word created by using a *ke- ... ~an* circumfix?

2.4.2 What is the overall message or intent of the sign?

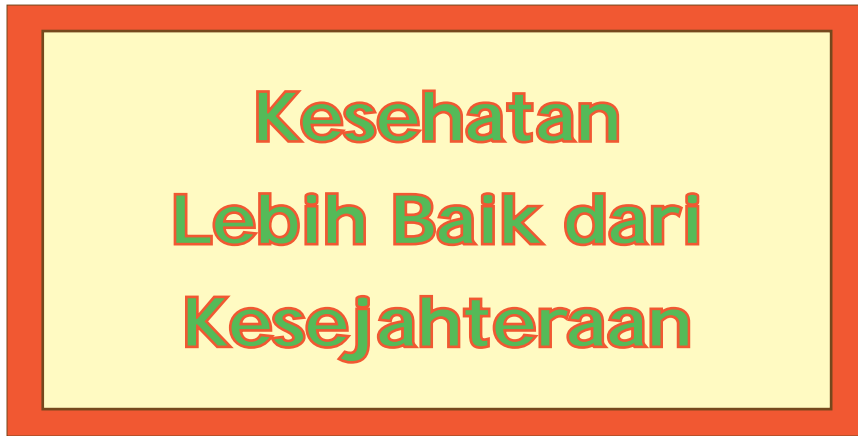
2.4.3 Would you expect to see this sign in an Australian school? Explain your answer.



2.5.1 What is the meaning of the word created by using a *ke- ... ~an* circumfix?

2.5.2 What is the overall message or intent of the sign?

2.5.3 Would you expect to see this sign in an Australian school? Explain your answer.



2.6.1 What is the meaning of the word created by using a *ke- ... -an* circumfix?

2.6.2 What is the overall message or intent of the sign?

2.6.3 Would you expect to see this sign in an Australian school? Explain your answer.



2.7.1 What is the meaning of the word created by using a *ke- ... ~an* circumfix?

2.7.2 What is the overall message or intent of the sign?

2.7.3 Would you expect to see this sign in an Australian school? Explain your answer.



2.8.1 What is the meaning of the word created by using a *ke- ... ~an* circumfix?

2.8.2 What is the overall message or intent of the sign?

2.8.3 Would you expect to see this sign in an Australian school? Explain your answer.
