

More on giving instructions

IMPERATIVE FORM:

In a previous module you learnt about using the imperative form of the verb to give instructions and commands.

For example:

Isi formulir ini.

Fill in this form.

Lihat di sana!

Look over there!

The imperative form is used, not only to give instructions, but also to give advice and directions.

To form the imperative you usually use the base form of the verb without any prefixes.

For example:

Minum obat ini.

Drink this medicine.

Here are examples of some of the imperatives you heard in this module.

Minum obat ini.

Drink this medicine.

Minum banyak air.

Drink lots of water.

Tidur yang banyak.

Sleep a lot.

Keluarkan PR kalian.

Take out your homework.

Cobalah soto saja.

Try the soup.

PARTICLE: *-lah*

Notice that in the last example above, the verb **coba** contains the particle *-lah*.

- *Lah* is often used with the imperative.
- It can either add emphasis to what you say or it can make the command or instruction sound less abrupt. Of course, whether what you say is more emphatic or less abrupt also depends on your tone of voice.
- You can really understand how to use *-lah* only after having heard it being used many times in a number of different contexts.
- *Lah* can be used with any of the examples above.

For example, you can say:

Minum obat ini

Drink this medicine.

Or,

Minumlah obat ini.

Drink this medicine.

Exercises



1. Look at these pictures and read how Zak is feeling. What instruction or advice would you give him?

Use words from the box to help you write your answers on the lines provided. Refer to the vocabulary list on Page 3 for help.

| | | | |
|--------------|--------------|-----------------|--------------|
| <i>makan</i> | <i>pakai</i> | <i>khawatir</i> | <i>cuci</i> |
| <i>lari</i> | <i>minum</i> | <i>coba</i> | <i>tidur</i> |

a)



'Saya takut gelap!'

_____ *senter!*

b)



'Saya lapar sekali.'

_____ *burger!*

c)



'Saya haus.'

_____ *air!*

d)



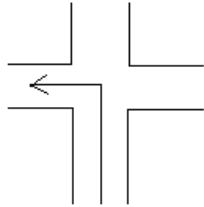
'Saya tidak tahu. Mau es-krim atau sate?'

_____ *lah sate saja.*

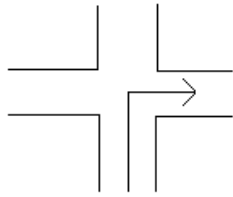
More on giving instructions

2. Study these diagrams. What would you say in order to give the directions to a taxi-driver?

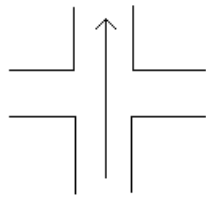
The first one has been done for you. Refer to the vocabulary list on Page 3 for help.



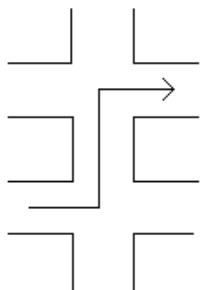
Jalan lurus. Lalu belok kiri.



a)



b)



c)

Vocabulary:

| | |
|-----------------|--------------------|
| <i>pakai</i> | use |
| <i>khawatir</i> | worry |
| <i>cuci</i> | wash |
| <i>tidur</i> | sleep |
| <i>lari</i> | run |
| <i>takut</i> | scared |
| <i>gelap</i> | dark |
| <i>senter</i> | torch / flashlight |
| <i>air</i> | water |
| <i>sedih</i> | sad |
| <i>jalan</i> | go / travel |
| <i>lurus</i> | straight ahead |
| <i>lalu</i> | then |
| <i>belok</i> | turn |
| <i>kiri</i> | left |
| <i>kanan</i> | right |