

# Do you have your hat?

You have learnt a lot about Indonesian verbs in Worksheets 4 and 6. In online Learning Object 7 'Pack a Backpack', you encountered a new verb: *membawa*. In this worksheet, let's see if you can work out what *membawa* means.

## Exercises



1. Read the following Indonesian and English sentences carefully and look closely at the verbs.

<i>Apa kamu membawa topi?</i>	Do you have your hat with you?
<i>Saya membawa payung ke sekolah.</i>	I am taking an umbrella to school.
<i>Boleh saya membawa teman ke pesta?</i>	May I bring a friend to the party?

Read these Indonesian and English sentences and also look closely at the verbs. Remember that putting *tidak* before the verb makes the sentence negative.

<i>Saya tidak membawa topi.</i>	I don't have a hat with me.
<i>Saya tidak membawa payung.</i>	I'm not taking an umbrella.
<i>Saya tidak membawa teman ke pesta.</i>	I'm not bringing a friend to the party.

- a) Now that you have read all the above sentences carefully, write down what you think *membawa* means and the situations in which it is used.

---

---

---

---

- b) Read the sentences below and see if you can fill in the missing English word.

<i>Apa kamu membawa topi?</i>	Do you have your hat?
<i>Oh, tidak. Saya <b>lupa</b> membawa topi.</i>	Oh, no. I _____ to bring my hat.

- c) Write down what you think *lupa* means?

---

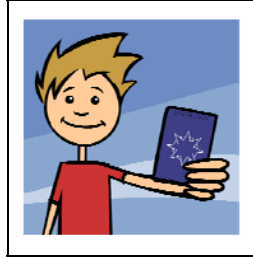
# Do you have your hat?



2. Look at the pictures below of Peter, Anna, Mrs Sugianto and Mrs Smart. Use the words in the table to write **two** sentences about each of them on the lines provided. Write one sentence about what they are taking, and one sentence about something they are not taking or have forgotten to take.

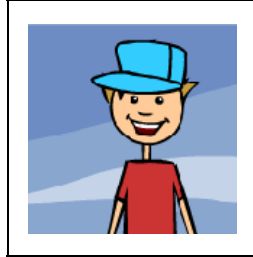
<i>Peter</i> <i>Anna</i> <i>Ibu Sugianto</i> <i>Ibu Smart</i>	<i>membawa</i> <i>tidak membawa</i> <i>lupa membawa</i>	<i>kamera</i> <i>topi</i> <i>HP</i> <i>botol air</i>
------------------------------------------------------------------------	---------------------------------------------------------------	---------------------------------------------------------------

Example:



*Peter membawa paspor.*  
*Dia tidak membawa HP.* or *Dia lupa membawa HP.*

a)




---



---

b)




---



---

c)

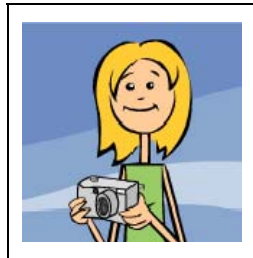



---



---

d)




---

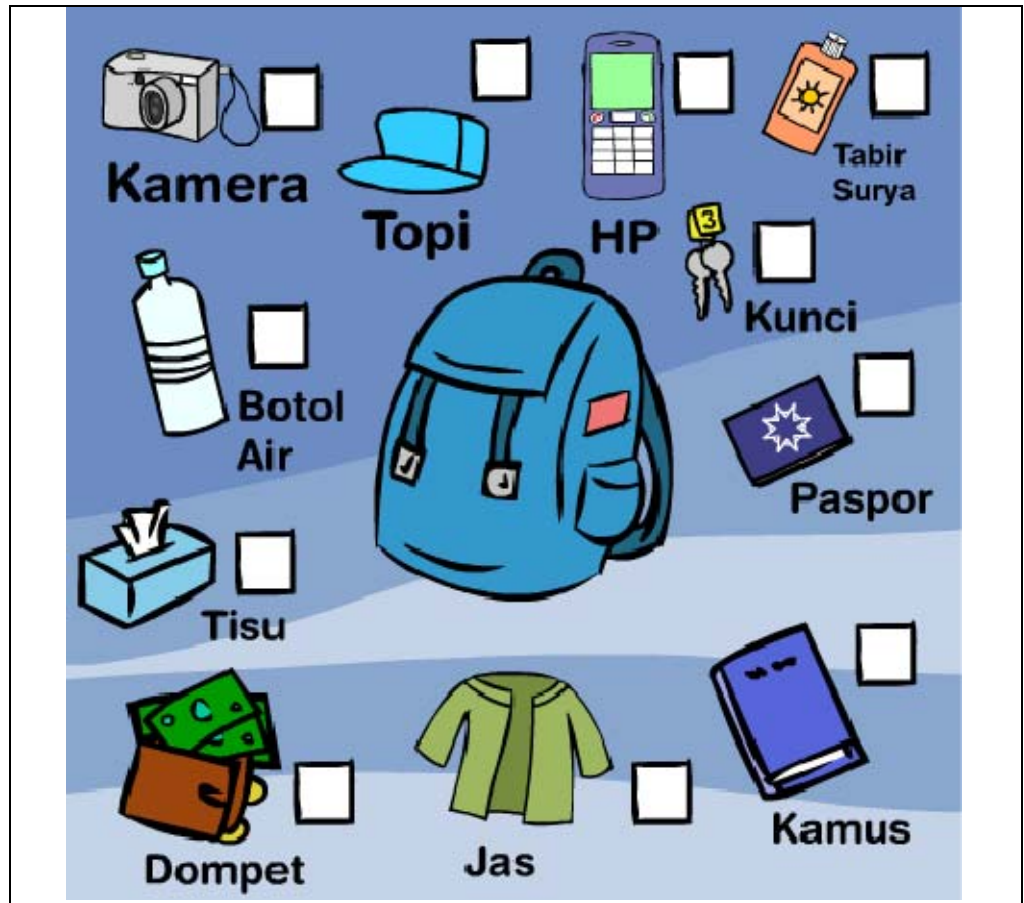


---

# Do you have your hat?



3. Tick the boxes beside the items you would take if you were travelling to Monas.



Now, write sentences identifying the items you would take with you and those you would leave behind.

For example:

*Saya membawa botol air.  
Saya tidak membawa kamus.*

- a) \_\_\_\_\_
- b) \_\_\_\_\_
- c) \_\_\_\_\_
- d) \_\_\_\_\_
- e) \_\_\_\_\_
- f) \_\_\_\_\_
- g) \_\_\_\_\_