

'Someone', 'somebody', 'several people'

You already know that in Indonesian, the word **orang** is used to refer to, or identify, a specific person or people.

For example:

Orang itu bapak saya.

That person is my father.

Orang-orang itu guru.

Those people are teachers.

Someone / Somebody:

However, in situations where you do not know a person's identity, or do not wish to identify them, you need to use the word **seseorang**. It is made up of the prefix *sese-* and the noun *orang*. It means 'someone' or 'somebody'.

For example:

Ada seseorang di luar.

There is someone outside.

Ada seseorang di pintu.

There is somebody at the door.

Another way of saying 'someone' or 'somebody' is to use the phrase **salah seorang**. You encountered this phrase in Learning Object 7: 'Who buys the apple juice?' when you had to work out which person within the group did something.

For example:

Salah seorang makan nasi goreng pada hari Senin.

Someone (in this group) eats fried rice on Mondays.

There is an important difference between **seseorang** and **salah seorang**.

- *Seseorang* refers to any unidentified person. No group is specified.
- *Salah seorang* refers to an unidentified person within a specific group

Several:

To refer to a relatively small number of unidentified people, use **beberapa** before *orang*. The phrase *beberapa orang* means 'several people'.

For example:

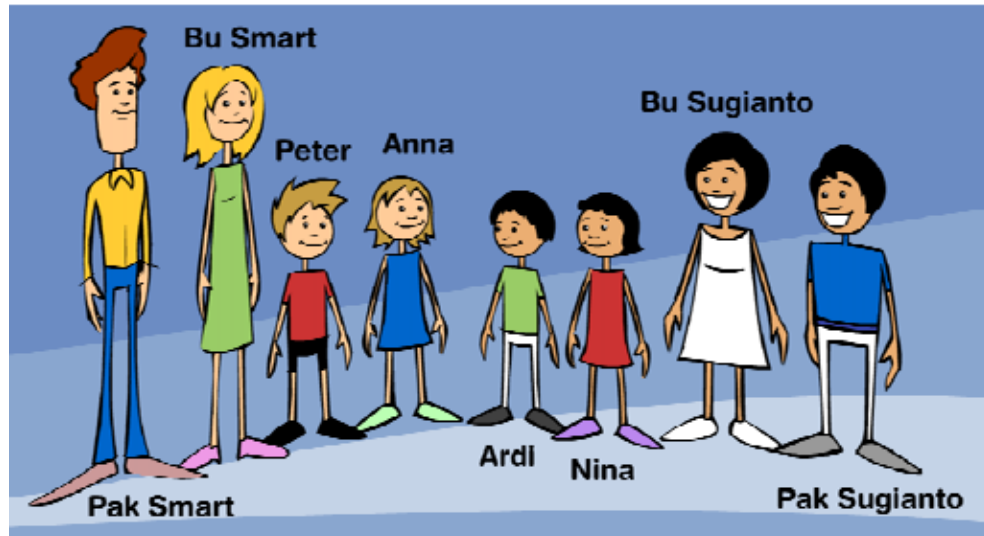
Ada beberapa orang sedang makan di dapur.

There are several people eating in the kitchen.

Exercise



1. Study the picture below carefully. Then answer the questions that follow in complete Indonesian sentences. Refer to the vocabulary list on this page for help.



Example:

Salah seorang sedang memakai gaun berwarna biru. Siapa?

Anna sedang memakai gaun berwarna biru.

Ada delapan orang di kelompok ini.

- a) *Salah seorang sedang memakai baju berwarna kuning. Siapa?*

- b) *Salah seorang sedang memakai gaun berwarna putih. Siapa?*

- c) *Ada dua orang yang tidak memakai pakaian berwarna biru, hijau, kuning atau putih. Siapa?*

- d) *Ada dua orang yang sedang memakai pakaian berwarna hijau. Siapa?*

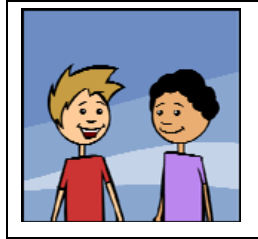
- e) *Salah seorang sedang memakai baju berwarna biru. Siapa?*

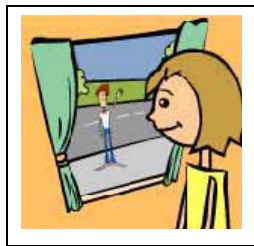
'Someone', 'somebody', 'several people'

2. Look at these pictures. Then, complete the four descriptions below by choosing the appropriate word or phrase from the box.

Then, match each description to its corresponding picture by writing the letter of the description on the line provided.

Refer to the vocabulary list for help.





seseorang beberapa orang salah seorang

- a) *Ada* _____ *di luar.*
- b) _____ *memakai baju ungu.*
- c) _____ *memakai sepatu putih.*
- d) *Ada* _____ *membawa tiga koper.*

Vocabulary:

| | |
|-----------------|-------------------|
| <i>kelompok</i> | a group |
| <i>memakai</i> | to wear (clothes) |
| <i>baju</i> | a shirt |
| <i>gaun</i> | a long dress |
| <i>pakaian</i> | clothes |
| <i>ungu</i> | purple |
| <i>sepatu</i> | shoes |