



Orangutan



- Mammalia Primates Pongidae
- Length (incl. tail): approx. 115 to 137cm (approx. 3.8 to 4.5 feet)
- Weight: approx. 40 to 110kg (approx. 88.2 to 242.5 lbs)
- Habitat: Sumatra and Borneo

The orangutan is a member of the ape family, and its name is derived from the Malay expression for "person of the forest." Orangutans have long, reddish-brown hair and mainly live in forests, making their homes in the tops of tall trees. They live mainly on fruits such as figs and durian, but also eat leaves, tree bark, nuts, termites, and insects. While other apes make their habitats in Africa, the orangutan can only be found in Sumatra and Borneo in Southeast Asia. The orangutan is currently designated as an endangered species due to rapid depletion of Southeast Asian rainforests.



Tools

Scissors
Paste, or woodwork glue
Stencil pen, or bodkin
Ruler

Notation Key

——— Scissors line
..... Mountain fold
- - - - - Valley fold
+ Glue spot
⊙ Glue reverse side
A1, B1 Parts No.

- ◆ The Pattern is divided into three blocks:
A (head), B (body and arms), and C (lower back and legs).
Follow the instructions for each block to assemble your orangutan.

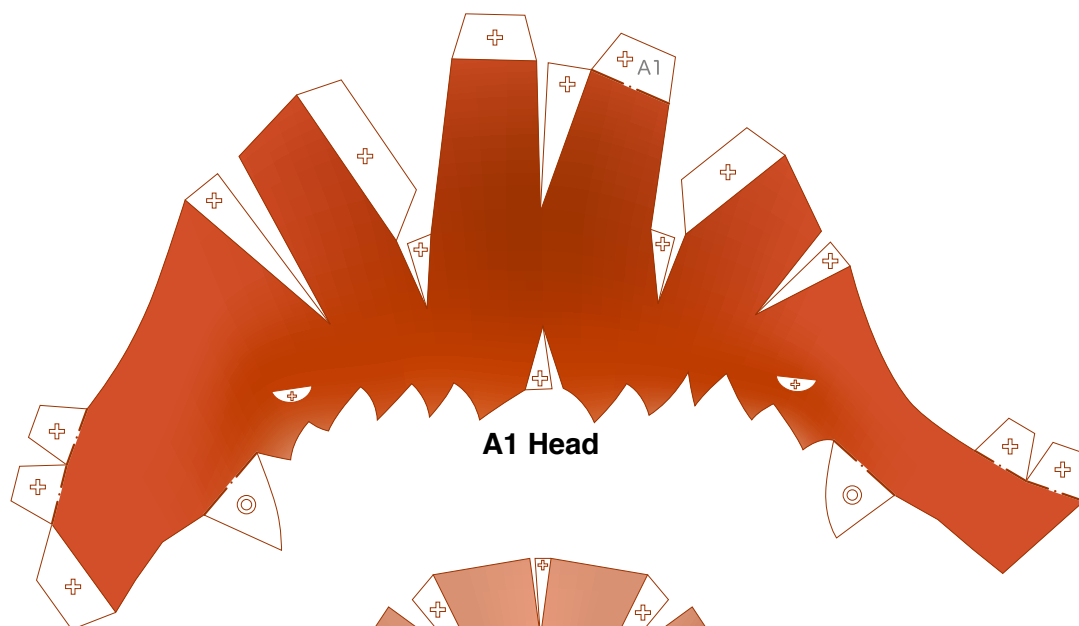
<Caution>

- ✂ Keep scissors and glue away from small children.
- ✂ Be careful not to cut your fingers when using scissors.



Head parts

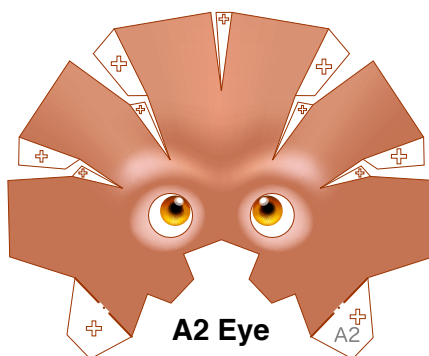
Refer to Assembly Instructions: Page1 / Page2.



A1 Head



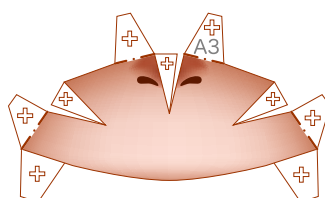
A7 Right ear



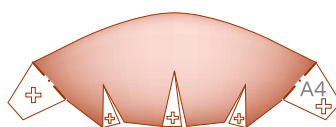
A2 Eye



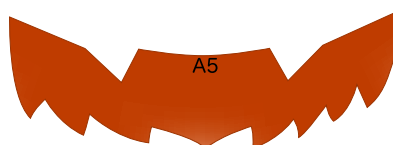
A6 Left ear



A3 Mouth



A4 Jaw

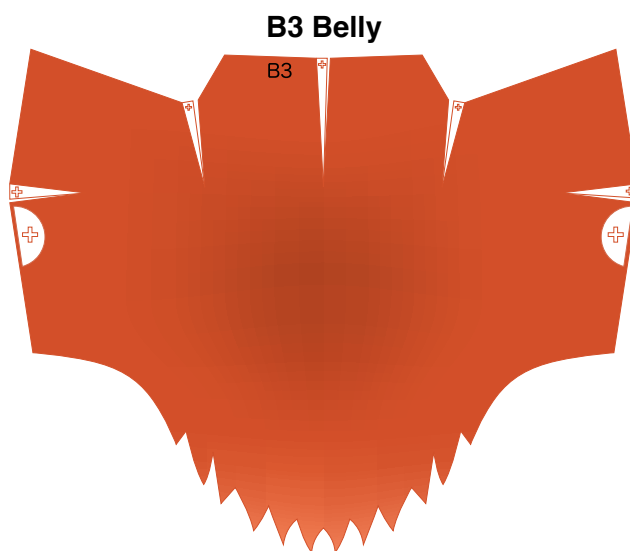
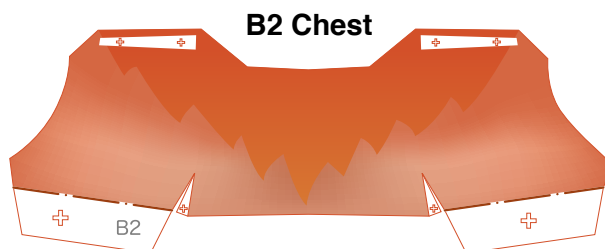
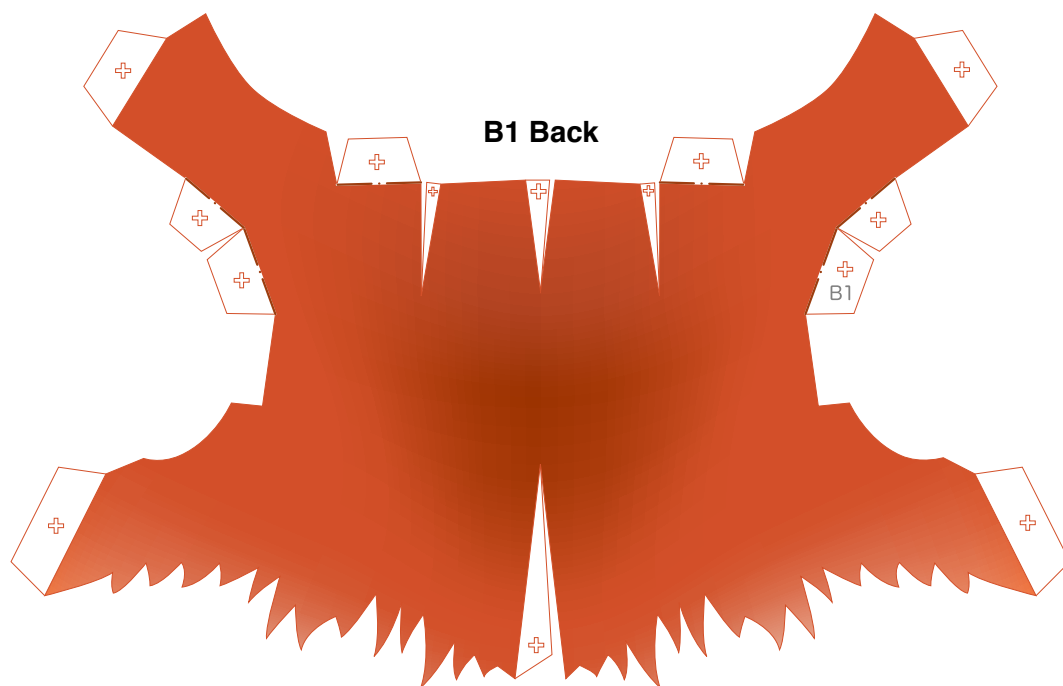


A5 Whiskers



Body parts

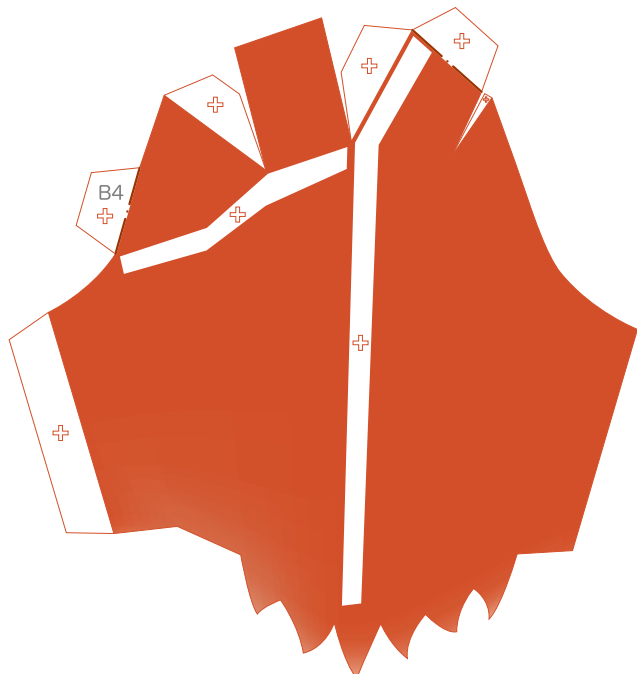
Refer to Assembly Instructions: Page2 / Page3.



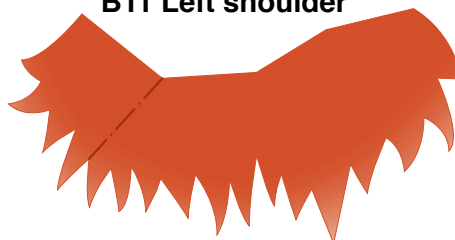
B Arm parts

Refer to Assembly Instructions: Page2 / Page3.

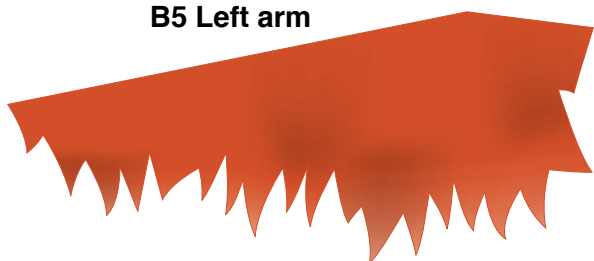
B4 Left shoulder



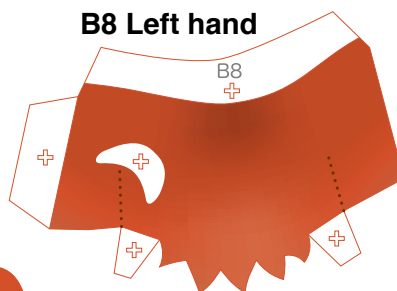
B11 Left shoulder



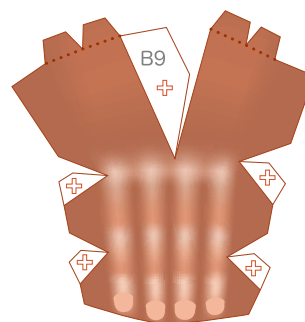
B5 Left arm



B8 Left hand



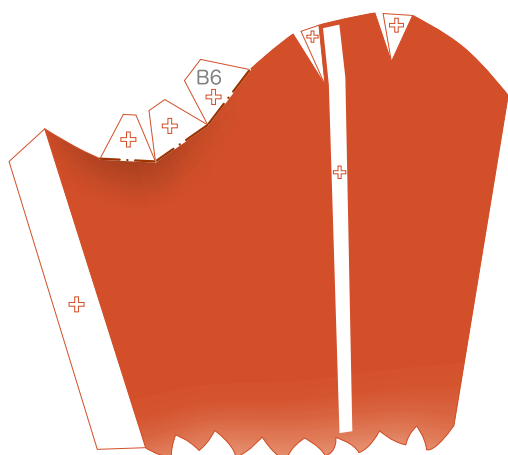
B9 Left hand



B10 Left hand



B6 Left arm



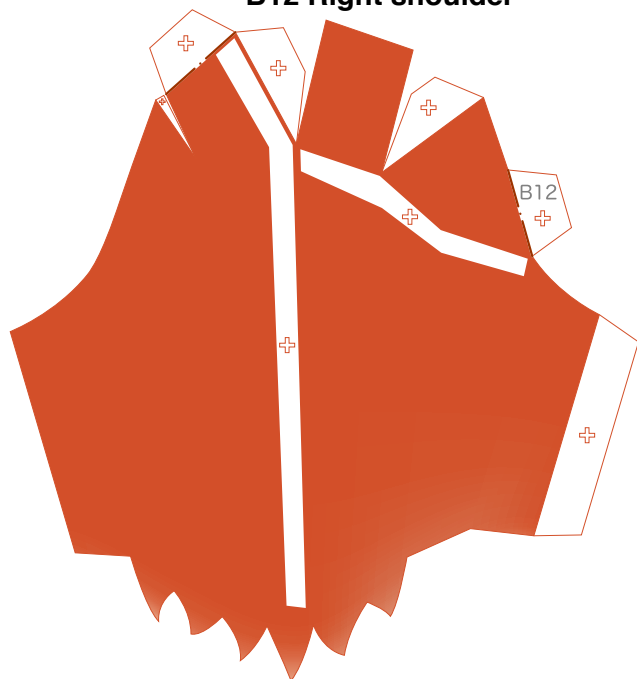
B7 Left arm



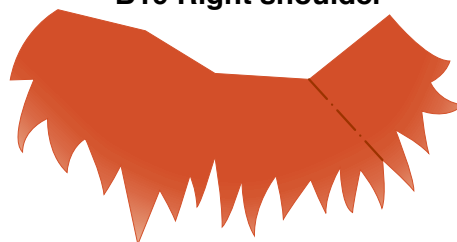
B Arm parts

Refer to Assembly Instructions: Page3.

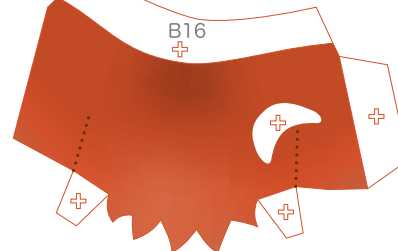
B12 Right shoulder



B19 Right shoulder



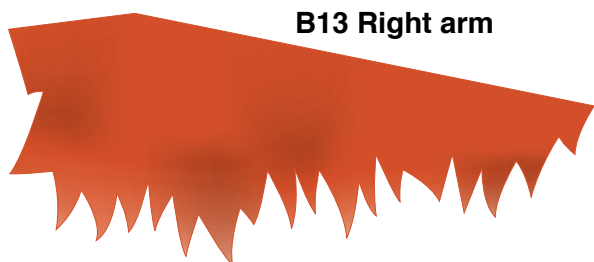
B16 Right hand



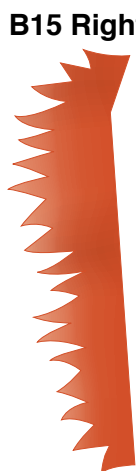
B18 Right hand



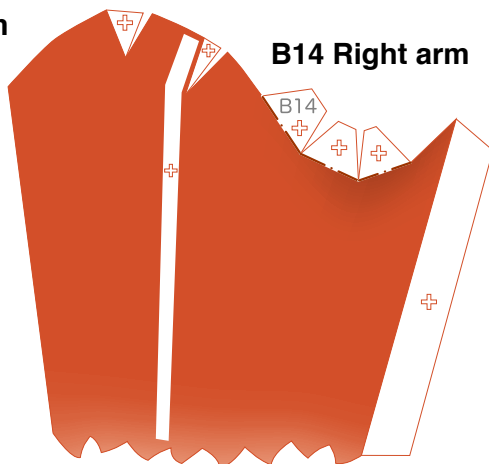
B13 Right arm



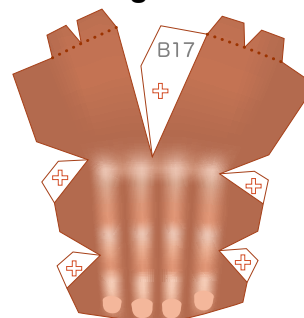
B15 Right arm



B14 Right arm



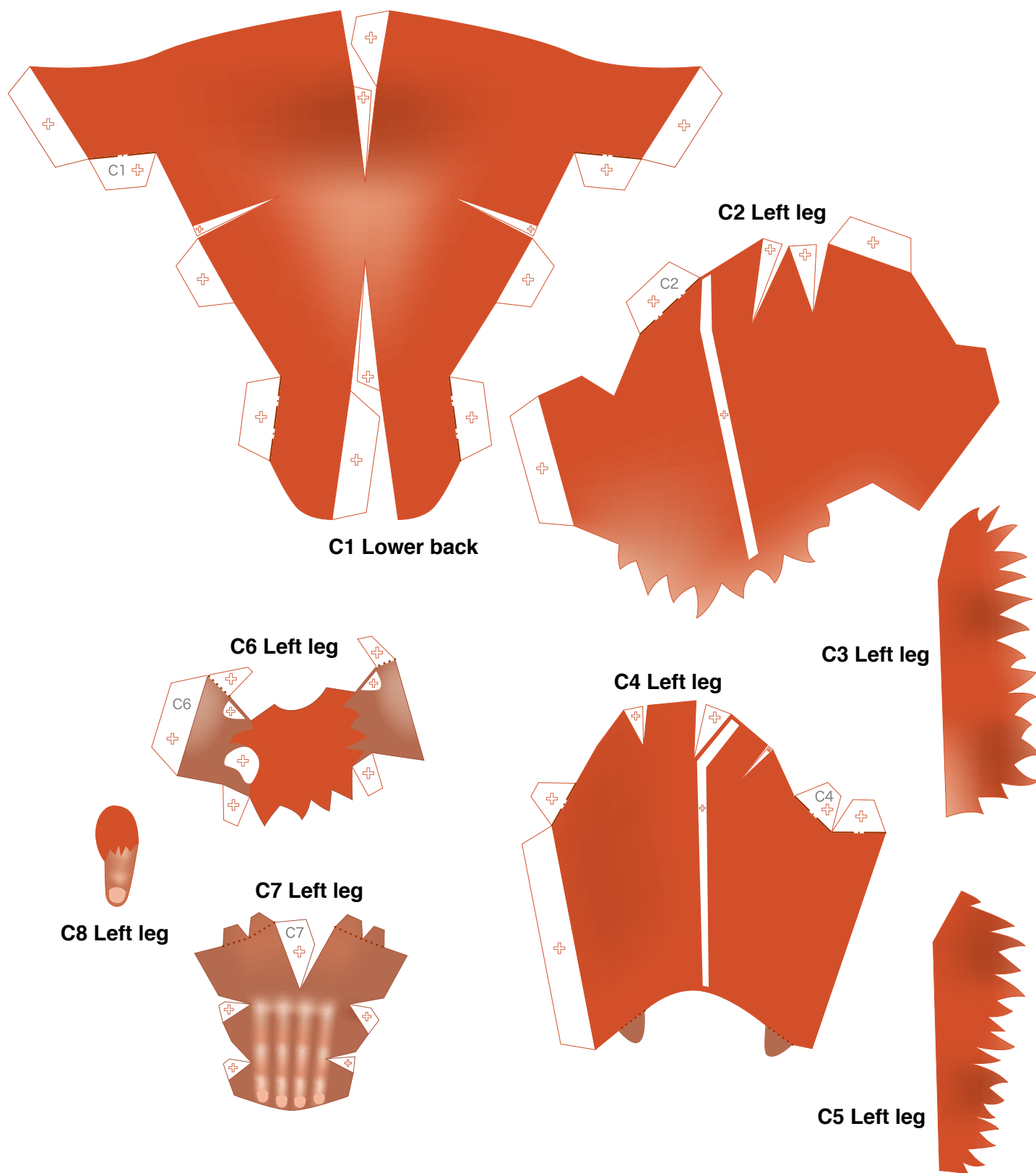
B17 Right hand





Lower back and leg parts

Refer to Assembly Instructions: Page4.

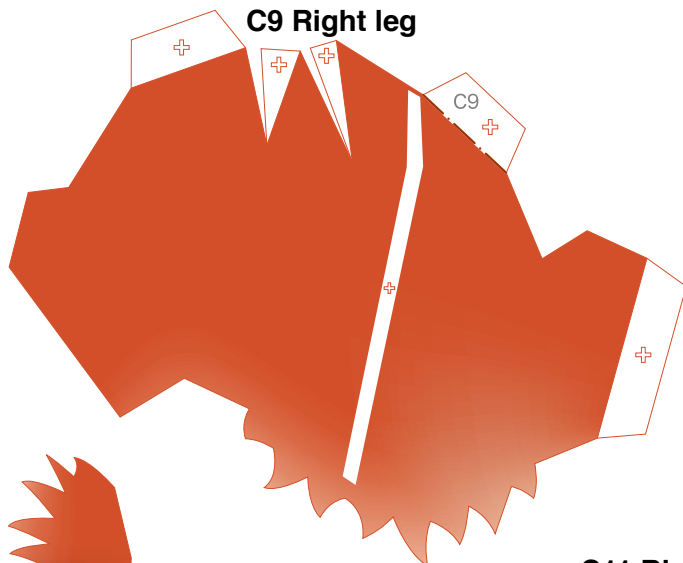




Lower back and leg parts

Refer to Assembly Instructions: Page4.

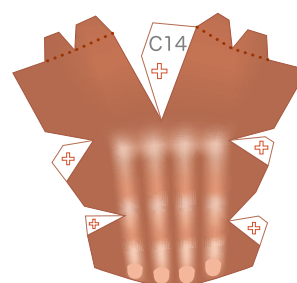
C9 Right leg



C13 Right leg



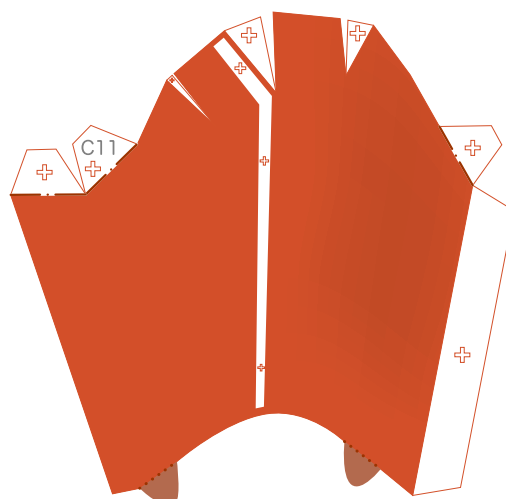
C14 Right leg



C15 Right leg



C11 Right leg



C10 Right leg



C12 Right leg



C16 Lower back

